

REPURPOSED DRUG MOLECULES FOR SERINE PROTEASE AND SPIKE GLYCOPROTEIN OF SARS-CoV-2

Hamdullah Khadim Sheikh^{1,5*}, Tanzila Arshad^{1,2}, Zainab Sher Mohammad^{1,3}, Iqra Arshad⁴ and Mohtasheemul Hassan⁵

¹Molecular Sciences and Research Pvt. Ltd. Pakistan.

²Department of Applied Chemistry, University of Karachi, Pakistan.

³Physical therapy, Health Sciences, Riphah International University, Islamabad, Pakistan.

⁴Research Centre for Modelling & Simulation, National University of Science & Technology.

⁵Department of Pharmacognosy, Faculty of Pharmacy, University of Karachi, Pakistan.

*hamdullah.khadim.sheikh@gmail.com; hamdullah.sheikh@uc.pt

ABSTRACT

Herein, docking analysis was performed between repurposed inhibitor drug molecules as ligands on structures of SARS-CoV-2 spike glycoprotein S1 and S2 along with serine protease which activate S1 and S2. Docking was carried out on molecular operating environment (MOE). Aim was to identify a single drug molecule that can bind with glycoproteins and also with serine protease, with binding energy above a certain threshold value. Hence, a drug molecule that can single handedly prevent the SARS-CoV-2 glycoprotein binding with the ACE-II receptor site on the cell. This inhibits the RNA of the virus to be transferred to the human cell. By evaluating the binding energy data of selected repurposed drug molecules, five drugs were identified to have high binding energies on both the spike glycoproteins S1 and S2 and also on serine protease TMPRSS2, TMPRSS4, TMPRSS11A, TMPRSS11D and TMPRSS11E. These five molecules also showed less variance in their binding energies across the reception sites. Among these five known drug molecules, Edoxaban is a commercially available and medicinally approved drug. Hence, potential molecular inhibitors for SARS-CoV-2 spike glycoprotein and serine protease S1 and S2 were identified for clinical trials on SARS-CoV-2.

Keywords: SARS-CoV-2; Docking; Spike glycoprotein; Serine protease, Edoxaban, Protease inhibitors.

INTRODUCTION

SARS-CoV-2 is a single positive strand RNA virus (Hui *et al.*, 2020) with enveloped structure. The known strategies to inhibit the virus by drugs have so far included identification of drug molecules for interaction with reception sites related to SARS-CoV-2 main protease (Mpro), RNA polymerase (RdRp), receptor-binding domain (RBD) and angiotensin-converting enzyme II (ACE-II). Identified RdRp molecular inhibitors have showed less specificity and side effects (Li and De Clercq, 2020). Mpro protease has proven to be potential drug target for anti-viral drug molecules for SARS-CoV in past (Lu *et al.*, 2006; Blanchard *et al.*, 2004; Chu *et al.*, 2004). It provides an opportunity for structure-based protease inhibitor drug molecular identification and design (Sheikh *et al.*, 2020; Ou *et al.*, 2020). In this work we are focusing on serine protease TMPRSS2, 4, 11E, 11D, 11E along with S1 and S1 subunits of spike glycoproteins of SARS CoV-2. Previous studies focused on inhibiting the entry of SARS-CoV-2 into the host cell by inhibiting the interaction of spike glycoprotein with ACE-II and TMPRSS (Fig. 1) (Hoffmann *et al.*, 2020).

Serine Protease

The entry of SARS-COV2 into the human cell is initiated by transmembrane serine protease family members such as TMPRSS2, 4, 11E, 11D, 11E. These serine proteases cleave and activate the spike protein. TMPRSS2 is present along with angiotensin converting enzyme 2 (ACE-II) on surface of the cell and acts as receptor for SARS and SARS-CoV-2 (Ou *et al.*, 2020). The inhibition of TMPRSS2 can reduce the interaction of SARS-CoV, SARS-CoV-2 (Hoffmann *et al.*, 2020), MERS-CoV (Rensi *et al.*, 2020), glycoproteins with ACE-II. In this work, we checked already known commercially available drug molecules for binding with TMPRSS2, 4, 11E, 11D, 11E serine protease inhibitors. The advantage of screening for approved drugs is that they can be readily deployed for treatment (Ou *et al.*, 2020).

Spike S1 and S2

The spike glycoprotein is located on the surface of SARS-CoV-2. It mediates the virus interactions with ACE-II receptor of the human cell. Trimeric S monomer protein contains two subunits proteins. The S1 subunit of S protein has receptor binding domain (RBD) that interacts with the ACE-II receptor on the cell after which the S2 subunit of S protein is responsible for virus and cell membrane fusion. This facilitates the entry of viral genetic material into the human cell. Inhibition of S protein can thus avert the process of virus binding with ACE-II receptor (Belouzard *et al.*, 2009). Hence, spike glycoprotein is a main drug target as SARS-CoV-2 uses it to bind to its receptor ACE-II on human cell. S1 itself consists of N-terminal domain (NTD) and C-terminal domains (C-domain). Depending on type of the virus, either NTD or C-domain can serve as the receptor-binding domain (RBD) (Ou *et al.*, 2020).

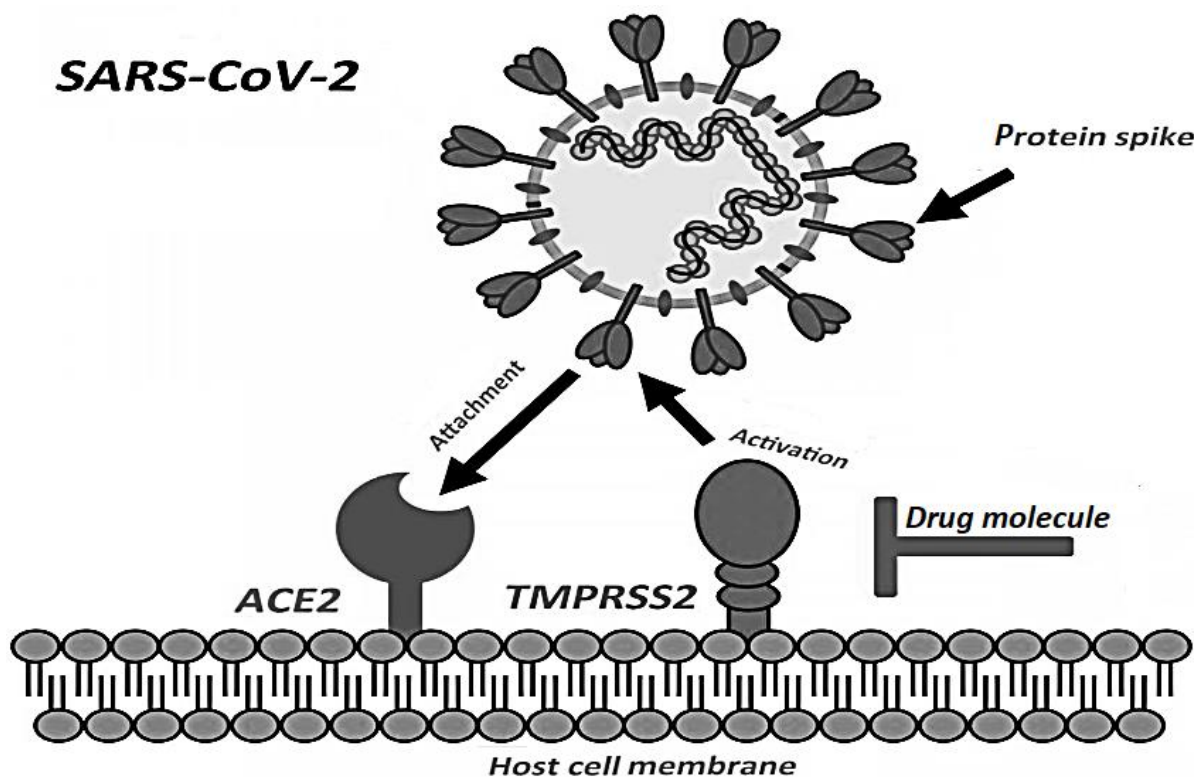


Fig. 1. Mechanism of SARS-CoV-2 binding with ACE-II (Hoffmann *et al.*, 2020).

MATERIALS AND METHODS

Docking simulations were performed using molecular operating environment (MOE version 2015.10) software. Structures of all drug molecules (**1-27**) were downloaded from PubChem website in smiles format. For preparation of drug target receptor sites, the structure of the spike glycoprotein S1 (6LZg) (Wang *et al.*, 2020) and S2 (6LXT) (Xia *et al.*, 2020) along with TMPRSS2 (O15393), TMPRSS4 (Q9NRS4), TMPRSS11A (Q6ZMR5), TMPRSS11D (O60235), TMPRSS11E (Q9UL52) were obtained from the Protein Data and UniProt in .pdb formats. Docking simulations were performed at pH 7.

RESULTS AND DISCUSSION

Binding of corona viruses to the receptor site on the surface of the cell and entry to the cell mainly depend on the spike proteins (S protein) on the virus that are attached to the envelope structure. Its extracellular domain contains two subunits, S1 receptor binding subunit and S2 which is membrane fusion subunit. S1 unit contains receptor binding unit which play a major role in the interaction of virus spikes to ACE-II receptor (Heald and Gallagher, 2012). It has been reported that the spike protein RBD can interact strongly with ACE-II receptor of the host cell enhancing the pathogenicity (Chowdhury and Maranas, 2020). During fusion of virus to the host cell membrane, the spikes are cleaved at S1 and S2 boundary by proteases at the host cell, depending upon the type of

coronavirus (Wang *et al.*, 2020). The proteases responsible for the cleavage of SARS CoV-2 spike glycoproteins subunit are TMPRSS2, 4, 11E, 11D, 11E transmembrane serine protease family members. Previously attempts have been made at inhibition of TMPRSS2, spike proteins and ACE-II interfaces. Our study is aimed to inhibit all these sites that enable SARS-CoV-2 entry into the host cell by a single repurposed drug molecule. Docking analysis was done on the basis of hydrogen bonding, Van der Waals and π -stacking interactions. Known serine protease, S-protein and S-protein-ACE-II receptor interface inhibitor molecules were used for docking (**1-27**) (Table-1). We used repurposed ligands or drug molecules for serine protease and spike glycoprotein inhibition. By setting up a pre-set threshold value of -6 Kcal/mol, we found out that (**11**), (**12**), (**15**), (**16**) and (**24**) have more than -6 Kcal/mol binding energy on all spike proteins and serine protease substrates (Table-2). These molecules also showed less variance in range of 0.3 to 0.4 indicating that these molecules have similar binding with both spike glycoproteins and also with serine protease. In this way a single molecule can inhibit the virus spike interaction with ACE-II receptor site on human cell. Repurposing a known drug molecule provides the benefit that molecule is already medicinally known. The above mentioned repurposed drugs for inhibiting entry of SARS-CoV-2 into the host cell are used as anticoagulants and in trials for treating coronary artery disease. Among (**11**), (**12**), (**15**), (**16**) and (**24**), Edoxaban (**16**) is a FDA approved anticoagulant drug and a direct factor Xa inhibitor (Fig. 2).

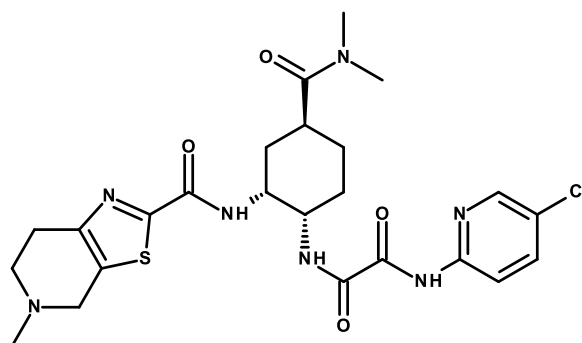


Fig. 2. Molecular structure of Edoxaban (**16**).

Table 1. Binding energies and variance of (**1-27**)

S. No.	Ligand	Binding energy = - Kcal/mol							Variance
		TMPrSS 4	TMPrSS11 A	ZMPrSS11 D	TMPrSS11 E	TMPrSS 2	S1	S2	
Code	-	Q9NRS4	Q6ZMR5	O60235	Q9UL52	O15393	6LZ G	6LX T	
1	Phenformin HCl	5.34	4.75	5.39	5.03	5.091	4.84	4.58	0.09022
2	Demethyl- Coclaurine	5.558	6.15	5.2509	6.006	5.241	5.04	4.86	0.235007
3	AEBSF	4.61	4.99	4.68	5.3	4.55	4.61	3.71	0.239062
4	Nafamostat	5.71	6.73	6.15	6.66	5.73	5.75	5.19	0.310948
5	Tazobactam	5.84	5.93	5.25	5.44	6.03	5.33	4.77	0.201357
6	Benserazid	5.33	6.05	5.215	6.398	5.47	4.821	5.087	0.308194
7	Eriodictyol	5.507	6.16	5.59	6.499	5.44	4.94	5.11	0.305258
8	Argatroban	7	7.42	6.73	7.64	6.63	5.94	6.57	0.323457
9	Vildagliptin	5.624	5.43	5.795	6.666	5.224	5.168	4.936	0.325758
10	Quercetin	5.34	6.19	5.398	6.475	5.42	4.93	4.817	0.376636
11	Letaxaban	6.74	7.65	6.94	7.43	6.66	6.15	6.18	0.327648
12	Otamixaban	6.9	6.71	6.68	7.89	6.13	6.88	6.29	0.322324
13	Nitrofurantoin	4.61	6.19	4.958	5.933	5.44	5.07	4.65	0.378666
14	Protirelin	6.689	7.09	6.122	6.927	5.843	5.407	6.178	0.369657
15	MAFP	6.39	6.47	6.55	7.82	6.01	6.59	6.34	0.327929
16	Edoxaban	6.55	7.51	7.45	8.14	6.28	6.6	7.49	0.455762
17	PMSF	4.28	4.78	4.23	5.19	4.54	5.63	6.21	0.544267
18	Sapropterin	5.208	6.81	5.24	5.77	5.47	5.096	3.63	0.895047

19	Pemirolast	4.47	6.03	5.2	5.93	5.67	4.93	3.91	0.617157
20	Pyruvic acid calcium isoniazid	4.52	5.54	4.95	5.81	4.84	4.6	3.498	0.566973
21	Carbazochrome	4.87	5.61	5.05	6.007	5.263	5.03	6.196	0.266323
22	Camostat	6.51	6.28	6.52	7.95	6.27	6.42	5.61	0.500381
23	Vidarabine	5.319	5.85	5.37	6.413	5.739	4.96	3.836	0.662792
24	Darexaban	6.81	7.33	7.45	8.1	7.34	6.71	6.41	0.319395
25	Benserazide	-5.45	5.49	5.33	6.14	5.31	5.17	4.87	16.92122
26	Luteolin-monoarabino side	5.45	6.01	5.12	6.3996	-5.38	5.13	5.33	17.36413
27	BIA 10-2474	5.94	6.32	-5.89	6.91	6.16	5.16	5.4	20.471

Table 2. Binding energies of (1-27) above threshold value of -6kcal/mol are highlighted.

S. No.	Name of ligand	Binding energy > -6 Kcal/mol						
		TMPRSS4	TMPRSS11A	ZMPRSS11D	TMPRSS11E	TMPRSS2	S1	S2
Code		Q9NRS4	Q6ZMR5	O60235	Q9UL52	O15393	6LZG	6LXT
1	Phenformin hcl	BELOW	BELOW	BELOW	BELOW	BELOW	BELOW	BELOW
2	Demethyl-Coclaurine	BELOW	ABOVE	BELOW	ABOVE	BELOW	BELOW	BELOW
3	AEBSF	BELOW	BELOW	BELOW	BELOW	BELOW	BELOW	BELOW
4	Nafamostat	BELOW	ABOVE	ABOVE	ABOVE	BELOW	BELOW	BELOW
5	Tazobactu	BELOW	BELOW	BELOW	BELOW	ABOVE	BELOW	BELOW
6	Benserazid	BELOW	ABOVE	BELOW	ABOVE	BELOW	BELOW	BELOW
7	Eriodictyol	BELOW	ABOVE	BELOW	ABOVE	BELOW	BELOW	BELOW
8	Argatroban	ABOVE	ABOVE	ABOVE	ABOVE	ABOVE	BELOW	ABOVE
9	Vildaglipti	BELOW	BELOW	BELOW	ABOVE	BELOW	BELOW	BELOW
10	Quercetol	BELOW	ABOVE	BELOW	ABOVE	BELOW	BELOW	BELOW
11	Letaxaban	ABOVE	ABOVE	ABOVE	ABOVE	ABOVE	ABOVE	ABOVE
12	Otamixaba	ABOVE	ABOVE	ABOVE	ABOVE	ABOVE	ABOVE	ABOVE
13	Nitrofurantoi	BELOW	ABOVE	BELOW	BELOW	BELOW	BELOW	BELOW
14	Protirelin	ABOVE	ABOVE	ABOVE	ABOVE	BELOW	BELOW	ABOVE
15	MAFP	ABOVE	ABOVE	ABOVE	ABOVE	ABOVE	ABOVE	ABOVE
16	Edoxaban	ABOVE	ABOVE	ABOVE	ABOVE	ABOVE	ABOVE	ABOVE
17	PMSF	BELOW	BELOW	BELOW	BELOW	BELOW	BELOW	ABOVE
18	Sapropterin	BELOW	ABOVE	BELOW	BELOW	BELOW	BELOW	BELOW
19	Pemirolast	BELOW	ABOVE	BELOW	BELOW	BELOW	BELOW	BELOW
20	Pyruvic acid calcium isoniazid	BELOW	BELOW	BELOW	BELOW	BELOW	BELOW	BELOW
21	Carbazochrome	BELOW	BELOW	BELOW	ABOVE	BELOW	BELOW	ABOVE
22	Camostat	ABOVE	ABOVE	ABOVE	ABOVE	ABOVE	ABOVE	BELOW
23	Vidarabine	BELOW	BELOW	BELOW	ABOVE	BELOW	BELOW	BELOW
24	Darexaban	ABOVE	ABOVE	ABOVE	ABOVE	ABOVE	ABOVE	ABOVE
25	Benserazide	BELOW	BELOW	BELOW	ABOVE	BELOW	BELOW	BELOW
26	Luteolin-monoarabinoside	BELOW	ABOVE	BELOW	ABOVE	BELOW	BELOW	BELOW
27	BIA 10-2474	BELOW	ABOVE	BELOW	ABOVE	ABOVE	BELOW	BELOW

CONCLUSION

We used SARS-CoV-2 spike glycoprotein S1 receptor-binding domains (RDB), S2 along with serine protease of human cell i.e. TMPRSS2, 4, 11E, 11D, 11E as a drug target sites for binding with repurposed and known protease inhibitors (1-27). We carried out the binding energy data analysis by filtering out the molecules with binding energies above the pre-set threshold value of -6 Kcal/mol across all substrates. Among the selected molecules, (11), (12), (15), (16) and (24) were found to have the higher than -6 Kcal/mol binding energies of interactions on all the reception sites. Through variance analysis we also found out that all of the above mentioned molecules have consistent binding energies across the glycoproteins and serine protease. Among these (16) Edoxaban is an FDA approved and available drug molecule. Hence, by data manipulation, we found out the most potent inhibitors that can bind with spike glycoprotein subunits and serine protease substrates at the same time.

Previous studies focused on inhibiting spike glycoproteins and serine protease individually. Thus, a single repurposed molecule can inhibit the entry of the SARS-CoV-2 into human cell by binding to all the reception sites that enable the entry of virus RNA of the virus into the human cell.

REFERENCES

- Belouzard, S., V.C. Chu and G.R. Whittaker (2009). Activation of the SARS coronavirus spike protein via sequential proteolytic cleavage at two distinct sites. *Proceedings of the National Academy of Sciences of the USA*, 106, 5871–5876.
- Blanchard, J.E., N.H. Elowe, C. Huitema, P.D. Fortin, J.D. Cechetto, L.D. Eltis and E.D. Brown (2004). High-throughput screening identifies inhibitors of the SARS coronavirus main proteinase. *Chemistry & biology*, 11(10):1445-1453.
- Chowdhury, R., C.D. Maranas (2020). Biophysical characterization of the SARS-CoV2 spike protein binding with the ACE2 receptor explains increased COVID-19 pathogenesis. *BioRxiv.*, <http://doi.org/10.1101/2020.03.30.015891>
- Chu, C.M., V.C. Cheng, I.F. Hung, M.M. Wong, K.H. Chan, K.S. Chan, R.Y. Kao, L.L. Poon, C.L. Wong, Y. Guan and J.S. Peiris (2004). Role of lopinavir/ritonavir in the treatment of SARS: initial virological and clinical findings. *Thorax*, 59(3):252-256.
- Heald Sargent, T. and R. Gallagher (2012). Ready, set, fuse! The coronavirus spike protein and acquisition of fusion competence. *Viruses*, 4(4):557-80.
- Hoffmann, M., H. Kleine-Weber, S. Schroeder, N. Krüger, T. Herrler, S. Erichsen, T.S. Schiergens, G. Herrler, N.H. Wu, A. Nitsche and M.A Müller (2002). SARS-CoV-2 cell entry depends on ACE2 and TMPRSS2 and is blocked by a clinically proven protease inhibitor. *Cell*, 181(2):271-280.
- Hui, D.S., E.I. Azhar, T.A. Madani, F. Ntoumi, R. Kock, O. Dar, G. Ippolito, T.D. Mchugh, Z.A. Memish, C. Drosten and A Zumla, (2020). The continuing 2019-nCoV epidemic threat of novel coronaviruses to global health- The latest 2019 novel coronavirus outbreak in Wuhan, China. *International Journal of Infectious Diseases*, 91:264-246.
- Khadim Sheikh, H., T. Arshad, Z.S. Mohammad, I. Arshad and M.M. Hassan (2020). PH Dependents Differential Binding Behavior of Protease Inhibitor Molecular Drugs for SARS-COV-2. *Chemrxiv.* <https://doi.org/10.26434/chemrxiv.12009018>
- Li, G. and C.E. De (2020). Therapeutic options for the 2019 novel coronavirus (2019-nCoV). *Nature Reviews Drug Discovery*, 19(3):149-150.
- Liu, X. and X.J. Wang (2020). Potential inhibitors for 2019-nCoV coronavirus M protease from clinically approved medicines. *BioRxiv.* <https://doi.org/10.1101/2020.01.29.924100>
- Lu, I.L., N. Mahindroo, P.H. Liang, Y.H. Peng, C.J. Kuo, K.C. Tsai, H.P. Hsieh, Y.S. Chao and S.Y. Wu (2006). Structure-based drug design and structural biology study of novel nonpeptide inhibitors of severe acute respiratory syndrome coronavirus main protease. *Journal of medicinal chemistry*, 49(17):5154- 5161.
- Ou, X., Y. Liu, X. Lei, P. Li, D. Mi, L. Ren, L. Guo, R. Guo, T. Chen, J. Hu and Z. Xiang (2020). Characterization of spike glycoprotein of SARS-CoV-2 on virus entry and its immune cross-reactivity with SARS-CoV. *Nature communications*, 11(1):1-2.
- Rensi, S., T. Liu, Y. Lo and G. McInnes (2020). Homology Modeling of TMPRSS2 Yields Candidate Drugs That May Inhibit Entry of SARS-CoV-2 into Human Cells. *ChemRxiv*, <https://doi.org/10.26434/chemrxiv.12009582.v1>
- Wang, Q., Y. Zhang, L. Wu, S. Niu, C. Song, Z. Zhang, G. Lu, C. Qiao, Y. Hu, K.Y. Yuen, Q Wang, J. Yan and J. Qi (2020). Structural and functional basis of SARS-CoV-2 entry by using human ACE2. *Cell*, 181(4):894-90.
- Wang, Q., Y. Qiu, J.Y. Li, Z.J. Zhou, C.H. Liao and X.Y. Ge (2020). A unique protease cleavage site predicted in the spike protein of the novel pneumonia coronavirus (2019-nCoV) potentially related to viral transmissibility. *Virologica Sinica*, 20:1-3.
- Xia, S., M. Liu, C. Wang, W. Xu, Q. Lan, S. Feng, F. Qi, L. Bao, L. Du, S. Liu and C. Qin (2020). Inhibition of SARS-CoV-2 (previously 2019-nCoV) infection by a highly potent pan-coronavirus fusion inhibitor targeting its spike protein that harbors a high capacity to mediate membrane fusion. *Cell research*, 30:1-3.

(Accepted for publication December 2020)